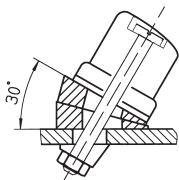
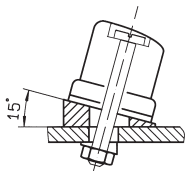


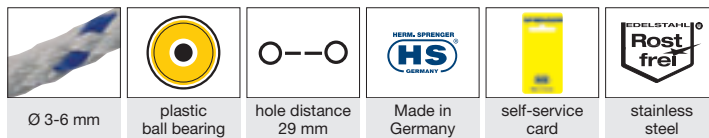
2 wedges mounted above each other, against each other = plain socket



2 wedges mounted above each other, in the same direction = 30°



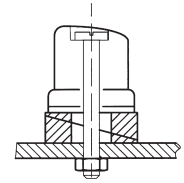
1 wedge = 15°



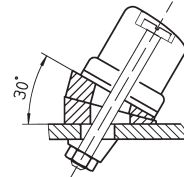
Advantages:

- high quality Camlan
 - abrasion proof
 - temperature resistant
- easy rope entry and release
- spring: stainless steel
- complete range of accessories

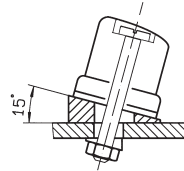
	rope Ø mm	material cams/ accessories	material cams/ accessories	art.-no.	
1 cam cleat camlan HT08	3 - 6	camlan	PA	36695 008 63	21
2 cam cleat camlan HT08 with special lead	3 - 6	camlan	PA	36698 008 63	37
3 cam cleat complete with lead IN FRONT of the cleat	3 - 6	camlan	PA	36696 008 63	29
4 special rope lead stainless steel with ground plate and washers	3 - 6	stainless steel		36687 008 63	20
5 wedge 15° plastic black 1 Set = 2 pcs.on cards	3 - 6	PA		36683 008 00	15
6 bow over the cleat stainless steel 1 Set = 2 pcs.on cards	3 - 6	stainless steel		36681 008 55	14
7 rope lead in front of the cleat with ground plate	3 - 6	PA / stainless steel		36688 008 63	13
8 cam cleat HT08 with stainless steel groundplate and rope lead	3 - 6	camlan	stainless steel	36695 908 63	43



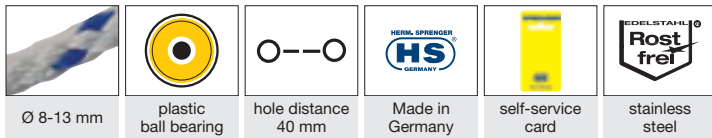
2 wedges mounted above each other, against each other = plain socket



2 wedges mounted above each other, in the same direction = 30°



1 wedge = 15°

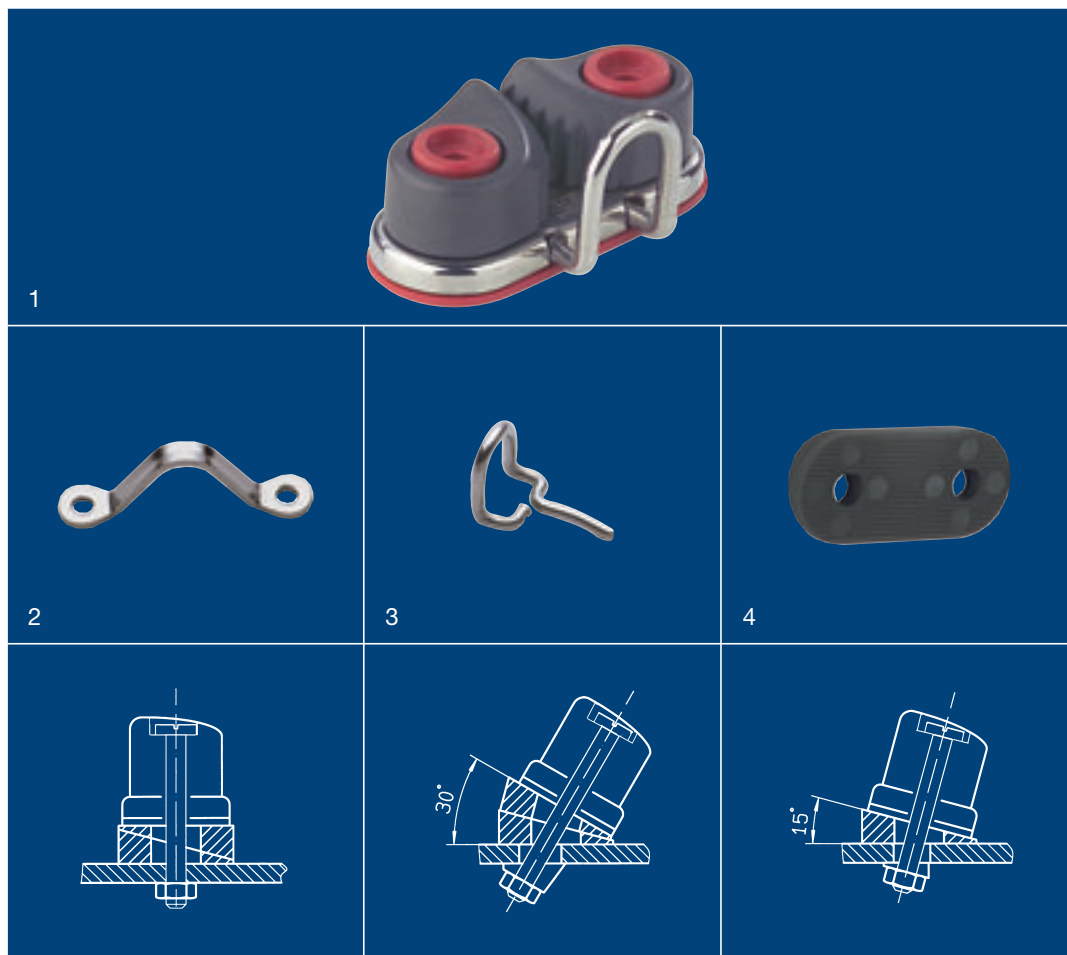


		rope Ø mm	material cams/ accessories	material cams/ accessories	art.-no.	
1	cam cleat camlan HT13	8 - 13	camlan	PA	36695 013 63	43
2	cam cleat camlan HT13 with special lead	8 - 13	camlan stainless steel	PA	36698 013 63	83
3	cam cleat complete with lead IN FRONT of the cleat	8 - 13	camlan stainless steel	PA	36696 013 63	69
4	special rope lead stainless steel with ground plate and washers	8 - 13	PA stainless steel		36687 013 63	42
5	wedge 15° plastic black 1 Set = 2 pcs.on cards	8 - 13	PA		36683 013 00	23
6	bow over the cleat stainless steel 1 Set = 2 pcs.on cards	8 - 13	stainless steel		36684 013 55	18
7	rope lead in front of the cleat with ground plate	8 - 13	PA stainless steel		36688 013 63	28
8	cam cleat HT13 with stainless steel groundplate and rope lead	8 - 13	camlan stainless steel	stainless steel	36695 913 63	85

Advantages:

- high quality Camlan
 - abrasion proof
 - temperature resistant
- easy rope entry and release
- spring: stainless steel
- complete range of accessories





	rope Ø mm	○--○ hole distance	material cams/ accessories	material groundplate	art.-no.	
1 cam cleat with aluminum-cams and needle bearing system	3 - 6 8 - 13 13 - 16	29 40 51	aluminum stainless steel	stainless steel	36685 008 54 013 54 016 54	49 98 130
2 bow over the cleat stainless steel	3 - 6 8 - 13 13 - 16		stainless steel		36681 008 55 013 55 016 55	14 16 25
3 replacement rope lead in front of the cleat stainless steel	3 - 6		stainless steel		36682 008 55	4
4 wedge 15° plastic black 1 set = 2 pcs.on card	3 - 6 8 - 13 13 - 16		PA		36683 008 00 013 00 016 00	15 23 38